

microline 5000 Truck

**First-class technology.
The new wheel alignment system
for truck/bus service workshops.**



All the best for your automobile service.

BEISSBARTH[®]
BEISSBARTH
Automotive Group

Measurement without cables. Radio-link measured-data transfer. Windows 2000/XP operating system.

Automatic measurement with permanent comparison of target/actual figures.

As soon as the microline system is set up, all measuring data can be accessed within seconds in large easy to read figures, made even clearer by a colour field that switches to red whenever an actual figure is outside the tolerance limits. The system comes with some 250 target truck data and adjustment images as standard!

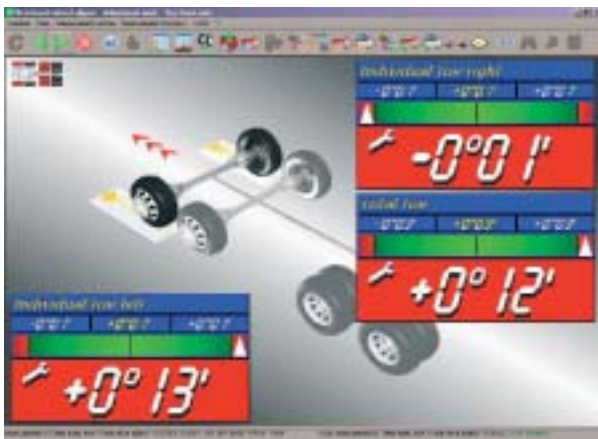
Extremely convenient: measurement while running on the batteries

Thanks to its replaceable batteries, the microline 5000 Truck system is ready for use instantly, at any time. The batteries can be replaced quickly. Battery operation is a genuine pleasure, with no cables to get in the way, and a worthwhile time saving too. The measured data are transmitted to the PC by a radio link, even without a line-of-sight connection.

This is currently the fastest no-cable data transmission method even if there is no direct visual connection with the receiving unit. The data is always displayed on the colour screen.

So practical: voice-controlled operation as an optional extra.

The microline 5000 Truck's voice control is a world premiere. You speak into a headset to tell the system what to do and what values you want it to display. You'll notice the benefit immediately during wheel alignment work, as your hands are free to perform the necessary adjustments.



Individual front toe measured-value display. The "wrench" symbol to the left of the measured value means that it can be adjusted.



Rear-axle measured-value display:
Full information available at a glance.

Equipment details and accessories designed for maximum profitability.



Cast aluminium measuring sensor and aluminium turntables.

The measuring sensor mechanism is protected against jolts and impact, and is easy to handle and weighs little thanks to the use of cast aluminium.

The measuring sensors with radio-link data transmission are angled for improved balance and a lower location for the CCD infrared camera.



The quick clamp for the truck's front-axle can be quickly attached to the tyre tread. No rim compensation is necessary.



The front wheel turntables permit the steering to be turned without the risk of trapped stresses.



The mobile measuring-sensor trolley is ideal for safe storage and easy transport to the vehicle.



The rear-axle quick clamp with long spacing pins ensures precise, reliable rim contact.



To keep wheel heights level: lightweight drive-on ramps for the rear wheels.

Technologically and economically on the safe side.

The microline system: tried and proven on thousands of passenger cars.

The microline system measuring technology, program software, operation and system components have proved their worth thousands of times over, all round the world. The microline system is Germany's best-seller and is recommended by all major car manufacturers.

Networking/multimedia capability as standard.

When you purchase the microline system, you acquire a product designed for the future. New software (vehicle target data) can be downloaded at any time from www.beissbarth.com against payment of a fee. Beissbarth is the only manufacturer to offer three technologies for networking your microline with other machines, your reception-counter PC or your business software. This is why we call it "future-proof"!

Product facts at a glance.

- Measuring sensors with integrated CCD infrared cameras, accuracy of + 2 minutes of angle for individual toe and camber
- Closed 360° measuring field for permanent precision check; additional measuring options for the rear axle
- No-cable measurements with fast radio data transmission
- Space-saving mobile equipment trolley
- Integrated charging station for four interchangeable batteries
- Protected PC and printer installation area
- Program-guided measurement of different axle combinations (max. 2 steered front and 3 rear axles)
- Only one program is needed for all truck and passenger car wheel alignment work. The program routine is managed via target data
- Fast track and camber figure overview with a single click (display overview)
- Customer and truck database; passenger car database as an optional extra
- Online and adjustment help with images and text
- Windows user interface with full Windows functionality
- Internet, network and multimedia capability
- Extensive truck target database with help texts and adjustment graphics
- Voice control available as an optional extra
- Software updates from the Beissbarth Software Center
- Trailer adapter bar, allowing trailer measurements.

Working area:

- Truck wheel stud pitch circles from 205 – 335 mm
- Maximum turntable load: 3500 kg

Technical data:

- Display on 19" colour screen (1024 x 768 pixels, true colour quality)
- Unlimited target data input in degrees/minutes – degrees/fractions – mm/inch
- Power supply: 100-240V/ 50-60 Hz (other values on request)
- Equipment dimensions (W x H xD) 700 x 1600 x 1130 mm
- Paint finish: RAL 5015 blue, RAL 9005 black

Radio system:

- Multi-channel system

Measured values:	Measuring accuracy (approx.):	Measuring range:	Total measuring range:
Total toe (front + rear axle)	±3'	±2°	±18°
Individual toe (FA + RA)	±2'	±2°	±9°
Camber	±2'	±3°	±10°
Wheel offset (FA)	±2'	±2°	±9°
Driven axle angle	±2'	±2°	±9°
Caster	±4'	±18°	±22°
Kingpin inclination	±4'	±18°	±22°
Toe-out on turns	±4'	±20°	±20°
Maximum steering angle (FA)	±4'	±60°	±300°
(RA)	±4'	±9°	±9°
Caster correction range	±4'	±7°	±10°
Additional measurements possible:			
Wheel offset (RA)	±2'	±2°	±9°
Wheelbase difference	±3'	±2°	±18°
Lateral offset (left/right)	±2'	±2°	±9°
Track difference	±3'	±2°	±18°
Axle offset (RA)	±3'	±2°	±9°

Equipment details and technical data subject to modification.

microline 5000 Truck

First-class technology.

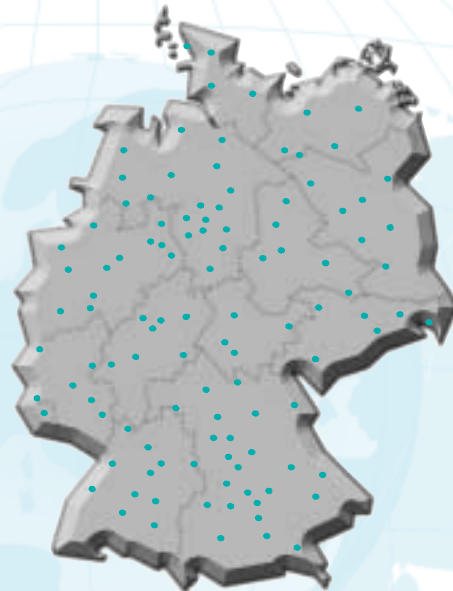
Easy to operate.

Service and spare parts supply: reliable full coverage worldwide.

Product installation, familiarisation and service is via our national service system in Germany and by certified service partners worldwide. We offer rapid on-the-spot service and maintenance. PC-supported units can obtain software updates by diskette, CD-ROM or via the internet. A simple mouse click takes you to www.beissbarth.com for connection to the Beissbarth Software Centre.

You can then (for a fee) download the required software or print out the latest vehicle data free of charge. A perfect service. Fast, simple, 24 hours a day.

Your specialist dealer:



Beissbarth Australia
Beissbarth Austria
Beissbarth Belgium
Beissbarth Bulgaria
Beissbarth China
FFB France
Beissbarth Italy
Beissbarth South Africa
Beissbarth UK
Beissbarth Ukraine

Thomastown Victoria 3074
1230 Wien
1930 Zaventem
Sofia 1582
Beijing 100101
58440 Myennes
41043 Formigine (MO)
Boksburg
Nottingham NG 11 7 EP
01054 Kiew

Tel. 0061-3-94642533
Tel. 0043-1-6164224
Tel. 0032-2-7208692
Tel. 00359-2-9732375
Tel. 0086-10-649264-83/-84/-31
Tel. 0033-3-86395050
Tel. 0039-059-570990
Tel. 0027-11-3978800
Tel. 0044-115-9815151
Tel. 0038-044-2512128

Beissbarth GmbH • Hanauer Straße 101 • D-80993 München

Telefon + 49 - 89 - 149 01 - 0 • Fax + 49 - 89 - 149 01 - 285 / - 240
www.beissbarth.com • Email: sales@beissbarth.com

All the best for your automobile service.

BEISSBARTH[®]
BEISSBARTH
Automotive Group